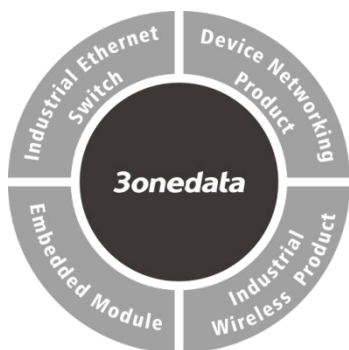


IAP2300F-2N2-5T-PDP12_36 2.4G wireless single-band AP Quick Installation Guide



3onedata Co., Ltd.

Address: 3/B, Zone 1, Baiwangxin High Technology Industrial Park, Song Bai Road, Nanshan District, Shenzhen, 518108, China

Website: www.3onedata.com

Tel: +86 0755-26702688

Fax: +86 0755-26703485

【Package Checklist】

Please check whether the package and accessories are intact while using the industrial wireless AP for the first time.

- | | |
|-------------------|--------------------|
| 1. Wireless AP x1 | 2. WIFI antenna x2 |
| 3. Warranty card | 4. Certification |

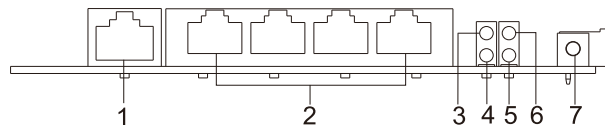
If any of these items are damaged or lost, please contact our company or dealers, we will solve it ASAP.

【Product Overview】

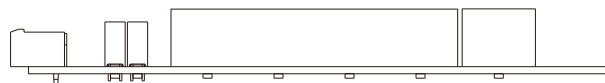
The product is an industrial 2.4G wireless single-band AP. Its model is IAP2300F-2N2-5T-PDP12_36 (2 WIFI IPEX-1 generation antenna pedestal + 4 100M LAN + 1 100M WAN + 1 12~36VDC power supply).

【Panel Design】

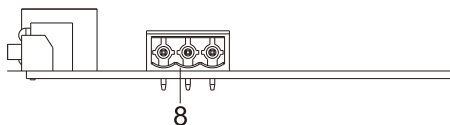
➤ Front View



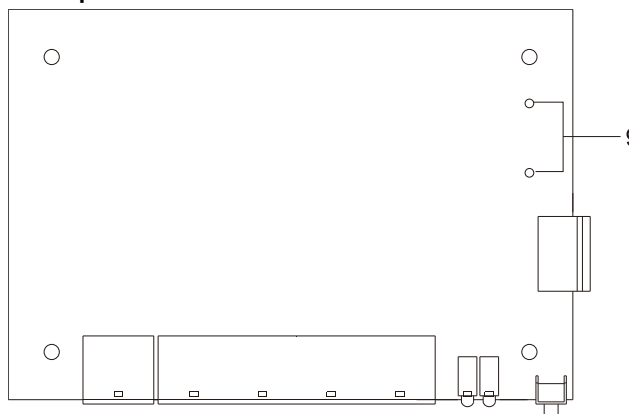
➤ Rear View



➤ Right view



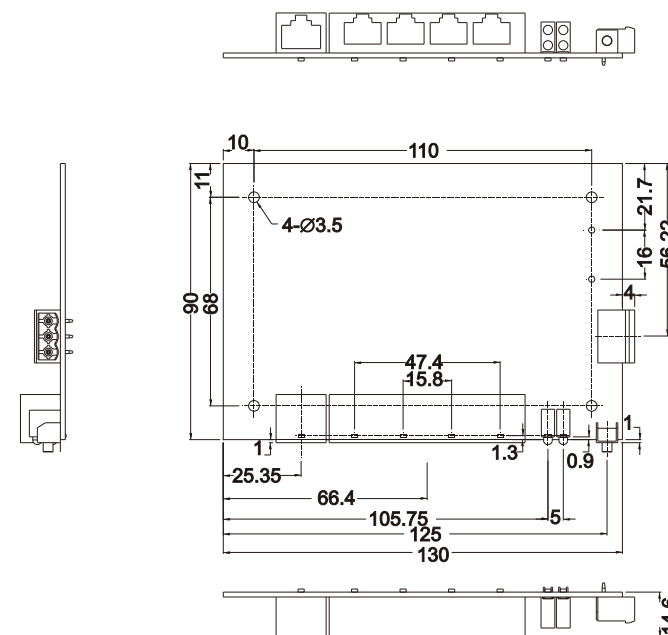
➤ Top view



1. 100M WAN port
2. 100M LAN port
3. System running indicator RUN
4. Power supply indicator PWR
5. 2.4G wireless indicator WIFI
6. Signal strength indicator Bridge
7. Reset button
8. Power supply input terminal block
9. WIFI IPEX-1 generation antenna pedestal

【Mounting Dimension】

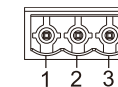
Unit: mm



Notice before mounting:

- Don't place or install the device in area near water or moist, keep the relative humidity of the device surrounding between 5%~95% without condensation.
- Before power on, first confirm the supported power supply specification to avoid over-voltage damaging the device.
- The device surface temperature is high after running; please don't directly contact to avoid scalding.

【Power Supply Connection】



The device provides 1 DC power input, interface is 3-pin 5.08mm pitch terminal blocks, power supply supports anti-reverse connection and 1.5kV isolation protection. Voltage range: 24VDC (12~36VDC). Its pin definitions are as follows:

PIN	1	2	3
Definition	V+	FG	V-



Notice:

- Power ON operation: First insert the power supply terminal block into the device power supply interface, and then plug the power supply plug contact and power on.
- Power OFF operation: First, remove the power plug, and then remove the wiring section of terminal block. Please pay attention to the above operation sequence.

【Reset Button Setting】



This device provides 1 reset button, press the button for 1-2S then release it to reboot the device; press the button for 5S then release it to restore factory defaults.

【Checking LED Indicator】

The device provides LED indicators to monitor the device working status with a comprehensive simplified troubleshooting; the function of each LED is described in the table as below:

LED	Indicate	Description
WIFI	ON	WIFI is running normally
	OFF	WIFI is running abnormally or closed
RUN	ON	The device is powered on or the device is abnormal.
	OFF	The device is powered off or the device is abnormal.
	Blinking	The device is running normally
PWR	ON	PWR is connected and running normally
	OFF	PWR is disconnected and running abnormally
Bridge	OFF	No bridging is established
	ON	The strength of bridging signal is 70~100dBm
	1 time/1s Blinking	The strength of bridging signal is 30~70dBm
	1 time/2s Blinking	The strength of bridging signal is 1~30dBm

【Logging in to WEB Interface】

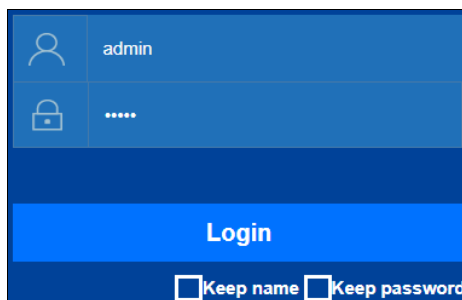
This device supports WEB management and configuration. Computer can access the device via LAN. The way of logging in to device's configuration interface via IE browser is shown as below:

Step 1 Configure the IP addresses of computer and the device to the same network segment, and the network between them can be mutually accessed

Step 2 Enter device's IP address in the address bar of the computer browser.

<http://192.168.1.254>

Step 3 Enter device's user name and password in the login window as shown below.



Step 4 Click "Login" button to login to the WEB interface of the device.



Note:

- The default IP address of the device is "192.168.1.254".
- The default user name and password of the device is "admin".
- If the user name or password is lost, user can restore it to factory settings via restore button or management software; all modified configurations will be cleared after restoring to factory settings, so please backup configuration file in advance.
- Please refer to user manual for specific configuration method of logging in to WEB interface and other

configurations about network management function.

【Specification】

Standard	
Standard	IEEE802.3、IEEE802.3u、IEEE802.11b/g/n、IEEE802.11i、IEEE802.11r
Panel	
Copper Port	5 10/100Base-T(X) RJ45 ports: 4 LAN + 1 WAN.
Antenna pedestal	2 WIFI IPEX-1 generation antenna pedestals, RP-SMA-K type (Female), support 1.5kV isolation protection
Indicator	Signal indicator, Running indicator, Power supply indicator, 2.4G wireless indicator
WIFI Transmission Rate	
802.11n	6.5~300Mbps
802.11b	11/5.5/2/1Mbps
802.11g	54/48/36/24/18/12/9/6Mbps
WIFI RF	
Channel	2.412GHz~2.4835GHz
RF power output	23dBm
Modulation scheme	DBPSK, DQPSK, CCK, OFDM, 16-QAM, 64-QAM
WIFI Receiving Sensitivity	
802.11n_HT40	-82dBm@MCS0、-64dBm@MCS7
802.11n_HT20	-85dBm@MCS0、-67dBm@MCS7
802.11g	-91dBm@6Mbps、-72dBm@54Mbps
802.11b	-93dBm@1Mbps、-87dBm@11Mbps
WIFI Transmission	

Power	
802.11n_HT40	23dBm@MCS0、 20dBm@MCS7
802.11n_HT20	23dBm@MCS0、 20dBm@MCS7
802.11g	23dBm@6Mbps、 20dBm@54Mbps
802.11b	23dBm@1Mbps、 23dBm@11Mbps
Power Supply	
Input power supply	Support DC power input, voltage range: 24VDC(12 ~ 36VDC), support anti-reverse connection, support 1.5KV isolation protection
Access terminal block	3-pin 5.08mm pitch terminal block
Power Consumption	
Power	≤4.6W@24VDC
Working Environment	
Working temperature	-40~75℃
Storage temperature	-40~85℃
Working humidity	5%~95% (no condensation)