



IMF204-2F Series

Wall or Rack Mounting

4 RS-485 and 2 Fiber Port Unmanaged Ring Network Serial to Fiber MODEM

- Support 4 RS-485 serial ports to 2 fiber ports.
- Fiber port supports ring network function, and the automatic recovery time of network failure is < 20ms.
- Support 0-115200bps line speed and non-blocking communication
- Support 12~48VDC or 100~240VAC wide voltage range(optional)



Introduction

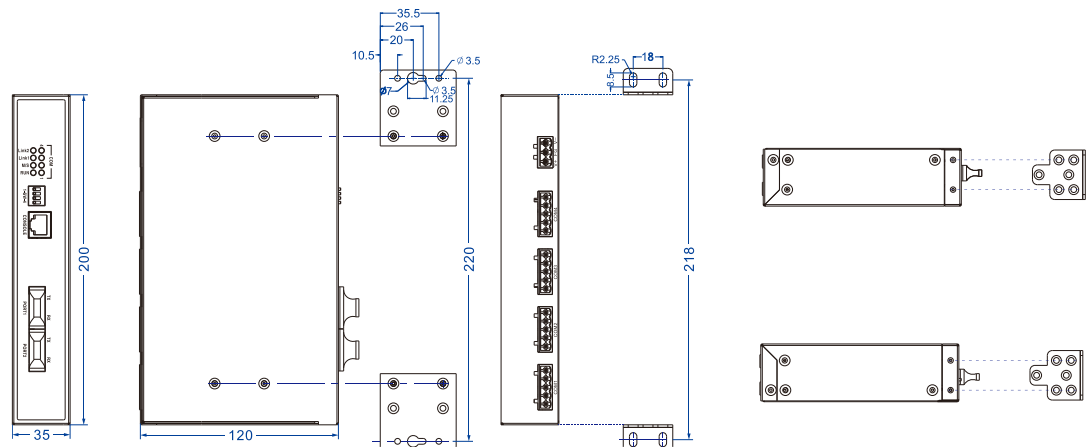
IMF204-2F series are high-performance unmanaged ring network serial to fiber MODEM designed for industrial application. This product supports point-to-point dual fiber port backup, or ring network redundancy of multiple devices. This product provides 4 RS-485 serial ports and 2 fiber ports. It adopts wall or rack mounting to meet the requirements of different application scenes.

DIP switch can implement master and slave configuration of the device. Hardware adopts fanless, low power consumption, wide temperature and voltage design and has passed rigorous industrial standard tests, which can suit for the industrial scene environment with harsh requirements for EMC. It can be widely used in electricity distribution automation, industrial automation, transportation, telecommunication and other fields.

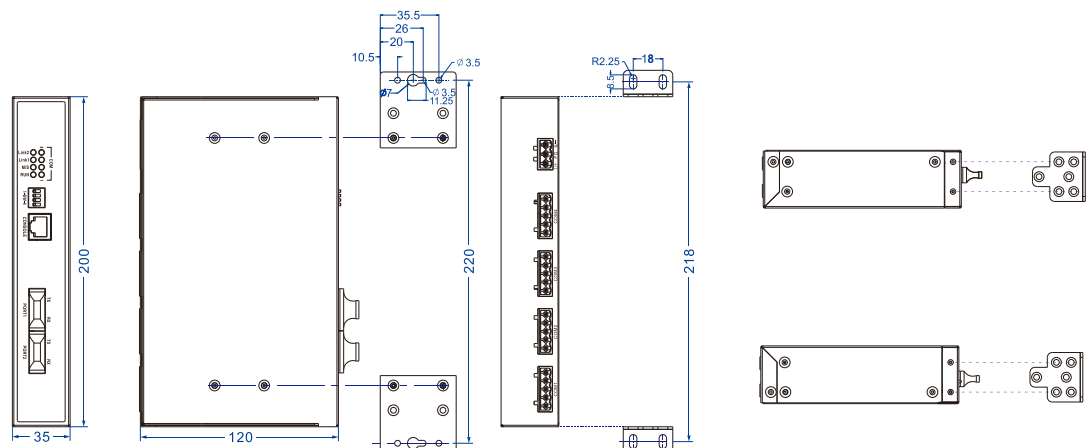
Dimension

Unit: mm

● IMF204-2F-4DI(RS-485)-P(12~48VDC)



● IMF204-2F-4DI(RS-485)-P(100~240VAC)



Specification

Fiber interface	Interface quantity: 2 (support ring network redundancy) Interface form: SC/ST/FC (optional) Transmission speed: 100Mbps Transmission distance: <ul style="list-style-type: none">● multimode: 2km● Single mode: 20km Transmission wavelength: <ul style="list-style-type: none">● multimode: 1310nm● single mode: 1310nm or 1550nm		
Serial Port	Standard: EIA RS-485 Quantity of serial port: 4 RS-485 serial port RS-485 signal: D+, D-, GND Baud rate: 0~115200bps Data bit: 5bit, 6bit, 7bit, 8bit Parity bit: None, Even, Odd, Space, Mark Stop bit: 1bit, 1.5bit, 2bit Interface form: 5-pin 5.08mm pitch terminal blocks Directional control: RS-485 direction adopts Automatic Data Direction Control technology Load capacity: RS-485/422 supports 32 points polling (customizable 128 points) Interface protection: 1.5kVAC isolation protection		
Indicator	Running status indicator, master/slave device status indicator, fiber port indicator, serial port indicator		
Power supply	IMF204-2F-4DI(RS-485)-P(12~48VDC) <ul style="list-style-type: none">● 12~48VDC, 3-pin 5.08mm pitch terminal blocks● Power supply nonpolarity IMF204-2F-4DI(RS-485)-P(100~240VAC) <ul style="list-style-type: none">● 100~240VAC, 3-pin 5.08mm pitch terminal blocks		
Power consumption	Available Models	No-load	Full-load
	IMF204-2F-4DI(RS-485)-P(12~48VDC)	2.76W@24VDC	2.93W@24VDC
	IMF204-2F-4DI(RS-485)-P(100~240VAC)	3.5W@220VAC	3.7W@220VAC
Working Environment	Operating temperature: -10~70°C Storage temperature: -10~70°C		

Relative humidity: 5%~95% (no condensation)

Physical Characteristic	Housing: IP30 protection, metal Installation: wall or rack mounting Dimension (W x H x D): 200mm×35mm×120mm Weight: 603g
Authentication	CE, FCC, RoHS
Warranty	3 years



Ordering Information

Available Models	Fiber Port	RS-485	Power Supply
IMF204-2F-4DI(RS-485)-P(12~48VDC)	2	4	12~48VDC
IMF204-2F-4DI(RS-485)-P(100~240VAC)	2	4	100~240VAC



Address: 3/B, Zone 1, Baiwangxin High Technology Industrial Park, Song Bai Road,
Nanshan District, Shenzhen, 518108, China

TEL.: +86-755-26702668 ext 835 FAX: +86-755-26703485

E-mail: ics@3onedata.com

Website: www.3onedata.com

◀ Please scan our QR code for more details

*Product pictures and technical data in this datasheet are only for reference. Updates are subject to change without prior notice. The final interpretation right is reserved by 3onedata.